



Cluster Plans

TOWER A

UNIT TYPOLOGY	FLOOR NOS.	UNIT TYPOLOGY	FLOOR NOS.
4 BHK Small - Type 2 4 BHK Small - Type 4	2, 4-12, 14-18, 20, 22-37 1, 3, 19, 21	4 BHK Small - Type 1 4 BHK Small - Type 3	2, 4-11, 14, 16-35 1, 3, 12, 15

CENTRAL GREEN SIDE



DROP-OFF SIDE



UNIT TYPOLOGY	FLOOR NOS.	UNIT TYPOLOGY	FLOOR NOS.
3 BHK Large - Type 1 3 BHK Large - Type 3 3 BHK Large - Type 4	2, 4-12, 14-18, 22-28, 30-37 20 & 29 1, 3, 19 & 21	3 BHK Large - Type 1 3 BHK Large - Type 3 3 BHK Large - Type 4	2, 4-11, 14, 16-19, 21-28, 30-34 20 & 29 1, 3, 12, & 15

TOWER B

UNIT TYPOLOGY	FLOOR NOS.	UNIT TYPOLOGY	FLOOR NOS.
4 BHK Small - Type 1 4 BHK Small - Type 3	2, 4-8, 10, 12, 14-22, 24, 26-34 1, 3, 9, 11, 23, 25	4 BHK Small - Type 1 4 BHK Small - Type 3	2, 4-8, 10, 12, 14-22, 24, 26-34 1, 3, 9, 11, 23, 25

CENTRAL GREEN SIDE



DROP-OFF SIDE



UNIT TYPOLOGY	FLOOR NOS.	UNIT TYPOLOGY	FLOOR NOS.
3 BHK Large - Type 3 3 BHK Large - Type 6 3 BHK Large - Type 8	2, 4-8, 10, 12, 14-19, 21, 22, 24, 26-28, 30-37 1, 3, 9, 11, 23, 25 20 & 29	3 BHK Large - Type 3 3 BHK Large - Type 6 3 BHK Large - Type 8	2, 4-8, 10, 12, 14-19, 21, 22, 24, 26-28, 30-37 1, 3, 9, 11, 23, 25 20 & 29

TOWER C

UNIT TYPOLOGY	FLOOR NOS.	UNIT TYPOLOGY	FLOOR NOS.
4 BHK Small - Type 1	2, 4-11, 14, 16-35	4 BHK Small - Type 2	2, 4-12, 14-18, 20, 22-37
4 BHK Small - Type 3	1, 3, 12, 15	4 BHK Small - Type 4	1, 3, 19, 21

CENTRAL GREEN SIDE



DROP-OFF SIDE

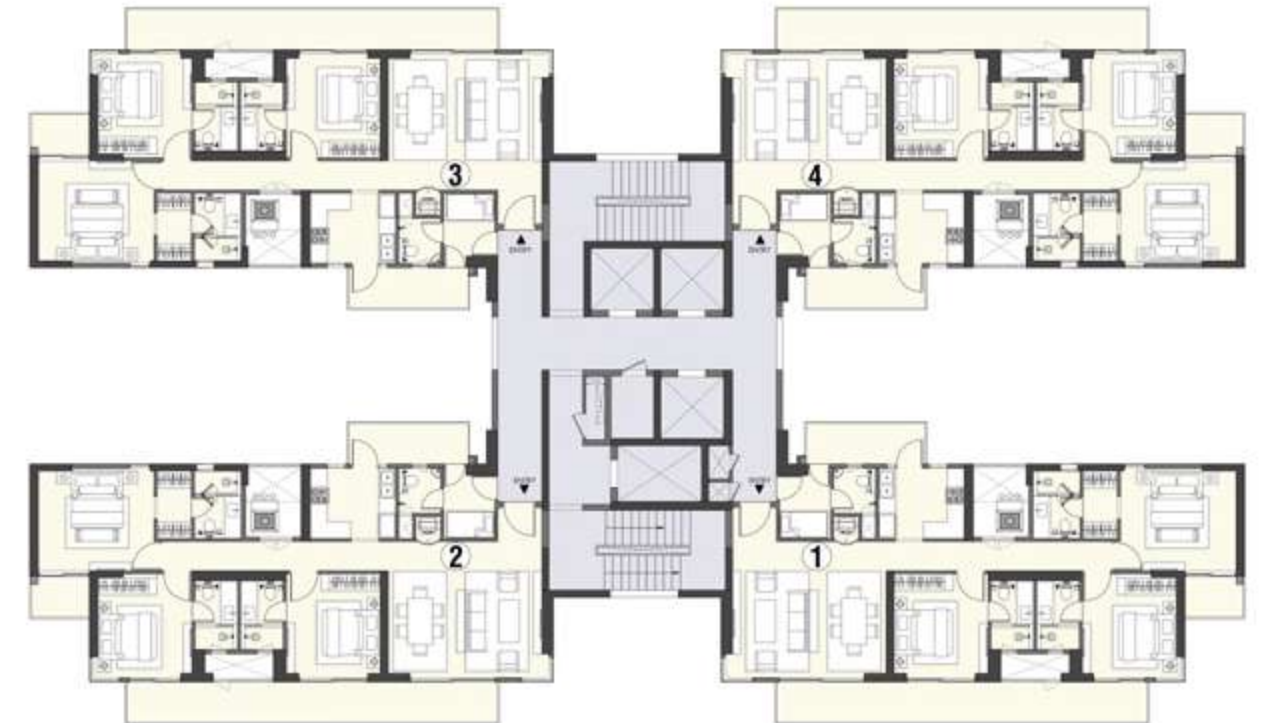


UNIT TYPOLOGY	FLOOR NOS.	UNIT TYPOLOGY	FLOOR NOS.
3 BHK Large - Type 1	2, 4-11, 14, 16-19, 21-28, 30-34	3 BHK Large - Type 1	2, 4-12, 14-18, 22-28, 30-37
3 BHK Large - Type 3	20 & 29	3 BHK Large - Type 3	20 & 29
3 BHK Large - Type 4	1, 3, 12 & 15	3 BHK Large - Type 4	1, 3, 19 & 21

TOWER D

UNIT TYPOLOGY	FLOOR NOS.	UNIT TYPOLOGY	FLOOR NOS.
3 BHK Large - Type 2	2, 4-11, 14, 16-33	3 BHK Large - Type 2	2, 4-12, 14-18, 20, 22-35
3 BHK Large - Type 5	1, 3, 12, 15	3 BHK Large - Type 5	1, 3, 19, 21

CENTRAL GREEN SIDE



DROP-OFF SIDE

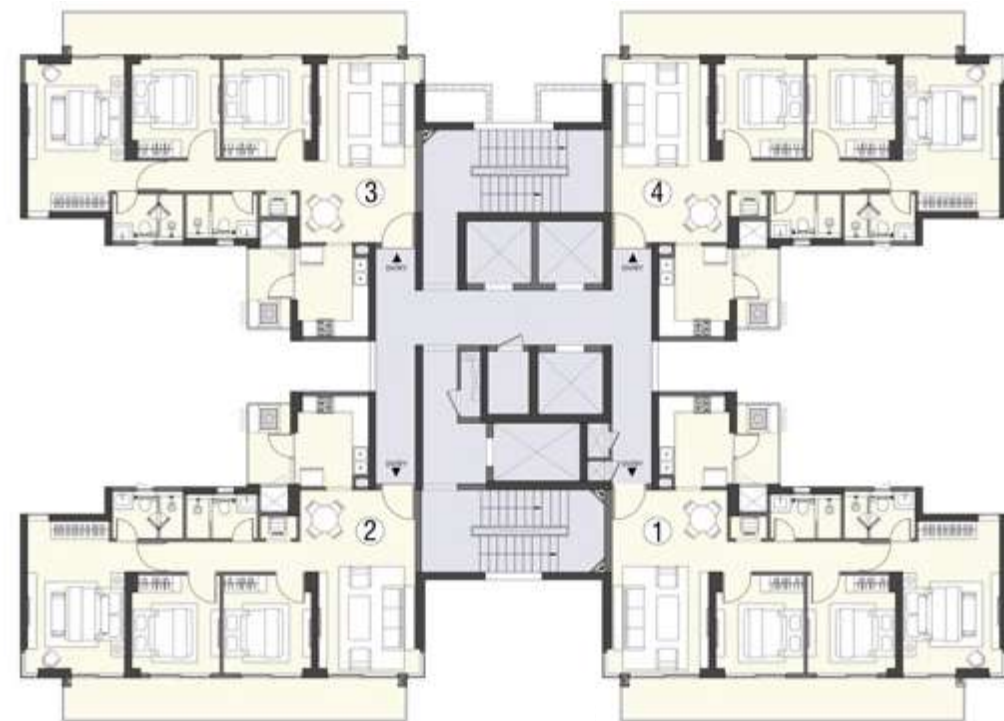


UNIT TYPOLOGY	FLOOR NOS.	UNIT TYPOLOGY	FLOOR NOS.
3 BHK Large - Type 2	2, 4-12, 14-18, 22-28, 30-35	3 BHK Large - Type 2	2, 4-11, 14, 16-19, 21-28, 30-32
3 BHK Large - Type 5	1, 3, 19, 21	3 BHK Large - Type 5	1, 3, 12, 15
3 BHK Large - Type 7	20 & 29	3 BHK Large - Type 7	20 & 29

TOWER E

UNIT TYPOLOGY	FLOOR NOS.	UNIT TYPOLOGY	FLOOR NOS.
3 BHK Small - Type 2 3 BHK Small - Type 5	2, 4-12, 14-18, 20, 22-37 1, 3, 19, 21	3 BHK Small - Type 1 3 BHK Small - Type 3	2, 4-11, 14, 16-40 1, 3, 12, 15

CENTRAL GREEN SIDE



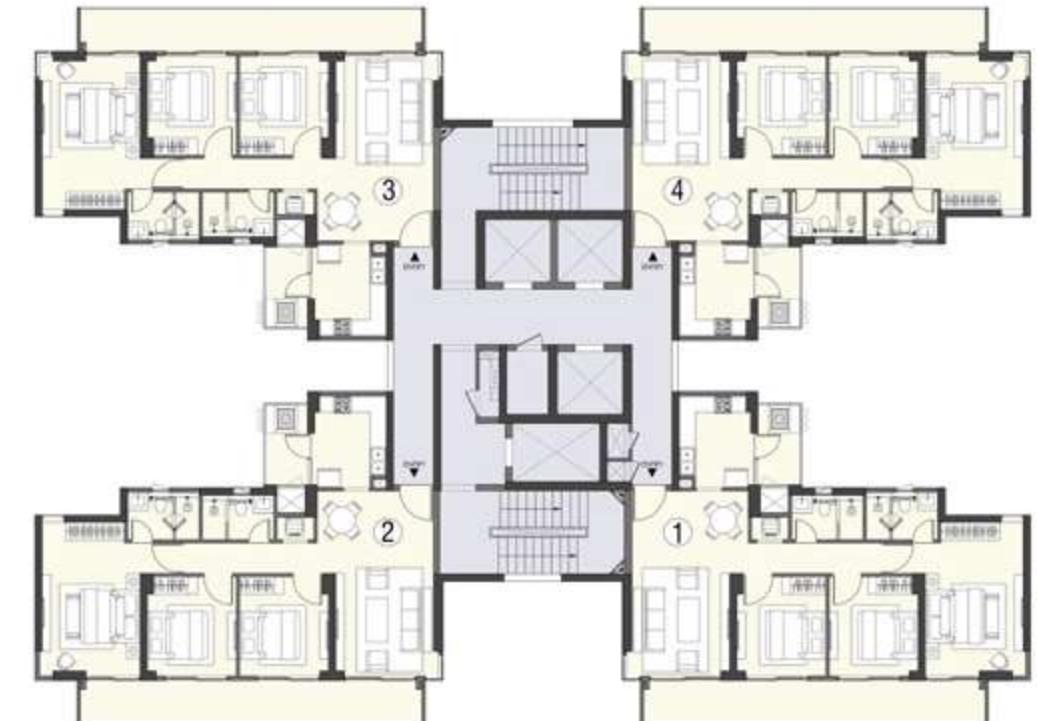
DROP-OFF SIDE

UNIT TYPOLOGY	FLOOR NOS.	UNIT TYPOLOGY	FLOOR NOS.
3 BHK Small - Type 1 3 BHK Small - Type 3 3 BHK Small - Type 7	2, 4-12, 14-18, 22-28, 30-38, 40 1, 3, 19, 21 20, 29, 39	3 BHK Small - Type 1 3 BHK Small - Type 3 3 BHK Small - Type 7	2, 4-11, 14, 16-19, 21-28, 30-37 1, 3, 12, 15 20, 29

TOWER F

UNIT TYPOLOGY	FLOOR NOS.	UNIT TYPOLOGY	FLOOR NOS.
3 BHK Small - Type 1 3 BHK Small - Type 4	1-6, 8-12, 14-22, 24-40 7, 23	3 BHK Small - Type 1 3 BHK Small - Type 4	1-6, 8-12, 14-22, 24-40 7, 23

CENTRAL GREEN SIDE



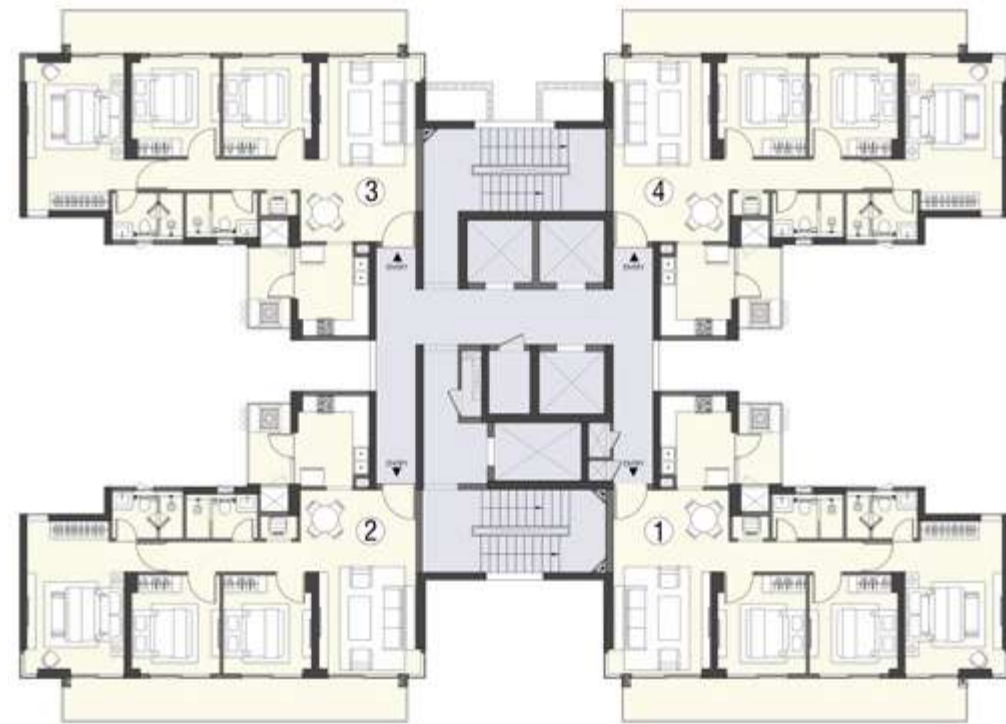
DROP-OFF SIDE

UNIT TYPOLOGY	FLOOR NOS.	UNIT TYPOLOGY	FLOOR NOS.
3 BHK Small - Type 2 3 BHK Small - Type 6 3 BHK Small - Type 8	1-6, 8-12, 14-19, 21, 22, 24-28, 30-37 7, 23 20, 29	3 BHK Small - Type 2 3 BHK Small - Type 6 3 BHK Small - Type 8	1-6, 8-12, 14-19, 21, 22, 24-28, 30-37 7, 23 20, 29

TOWER G

UNIT TYPOLOGY	FLOOR NOS.	UNIT TYPOLOGY	FLOOR NOS.
3 BHK Small - Type 1	2, 4-11, 14, 16-40	3 BHK Small - Type 2	2, 4-12, 14-18, 20, 22-37
3 BHK Small - Type 3	1, 3, 12, 15	3 BHK Small - Type 5	1, 3, 19, 21

CENTRAL GREEN SIDE



DROP-OFF SIDE



UNIT TYPOLOGY	FLOOR NOS.	UNIT TYPOLOGY	FLOOR NOS.
3 BHK Small - Type 1	2, 4-11, 14, 16-19, 21-28, 30-37	3 BHK Small - Type 1	2, 4-12, 14-18, 22-28, 30-38, 40
3 BHK Small - Type 3	1, 3, 12, 15	3 BHK Small - Type 3	1, 3, 19, 21
3 BHK Small - Type 7	20, 29	3 BHK Small - Type 7	20, 29, 39

Unit Plans

3BHK SMALL | 3BHK + 2T
TYPE-1

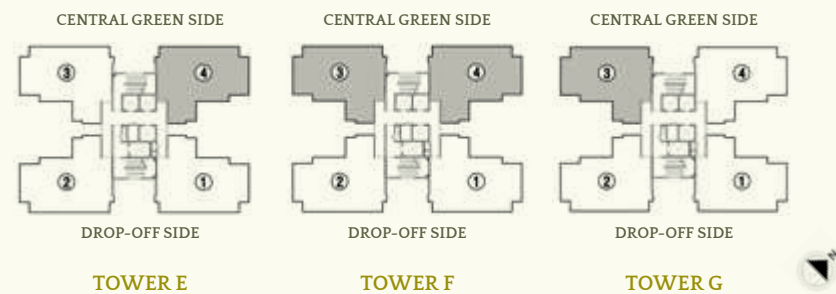


3BHK SMALL | 3BHK + 2T
TYPE-3



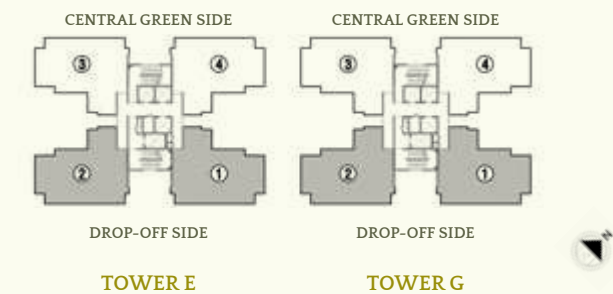
Carpet Area - 88.094 sq. m. (948.24 sq. ft.)
Balcony Area - 21.836 sq. m. (235.04 sq. ft.)

Tower E | Wing 4 | Floor Nos.: 2, 4-11, 14, 16-40
Tower F | Wing 3 & 4 | Floor Nos.: 1-6, 8-12, 14-22, 24-40
Tower G | Wing 3 | Floor Nos.: 2, 4-11, 14, 16-40



Carpet Area - 88.094 sq. m. (948.24 sq. ft.)
Balcony Area - 23.996 sq. m. (258.29 sq. ft.)

Tower E | Wing 1 | Floor Nos.: 1, 3, 12, 15
Tower E | Wing 2 | Floor Nos.: 1, 3, 19, 21
Tower G | Wing 1 | Floor Nos.: 1, 3, 19, 21
Tower G | Wing 2 | Floor Nos.: 1, 3, 12, 15

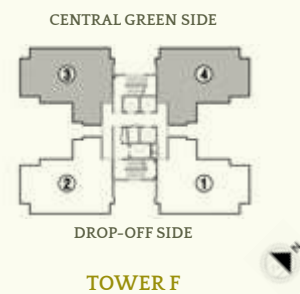


3BHK SMALL | 3BHK + 2T
TYPE-4



Carpet Area - 88.094 sq. m. (948.24 sq. ft.)
Balcony Area - 24.919 sq. m. (268.23 sq. ft.)

Tower F | Wing 3 & 4 | Floor Nos.: 7 & 23

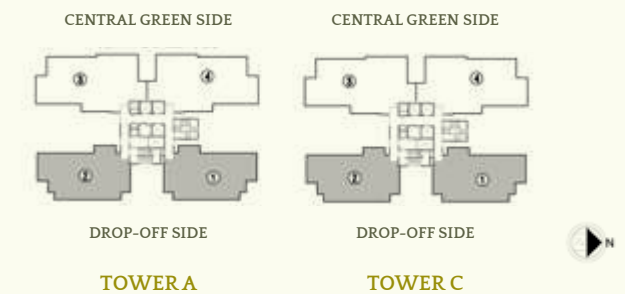


3BHK LARGE | 3BHK + 3T + U
TYPE-1



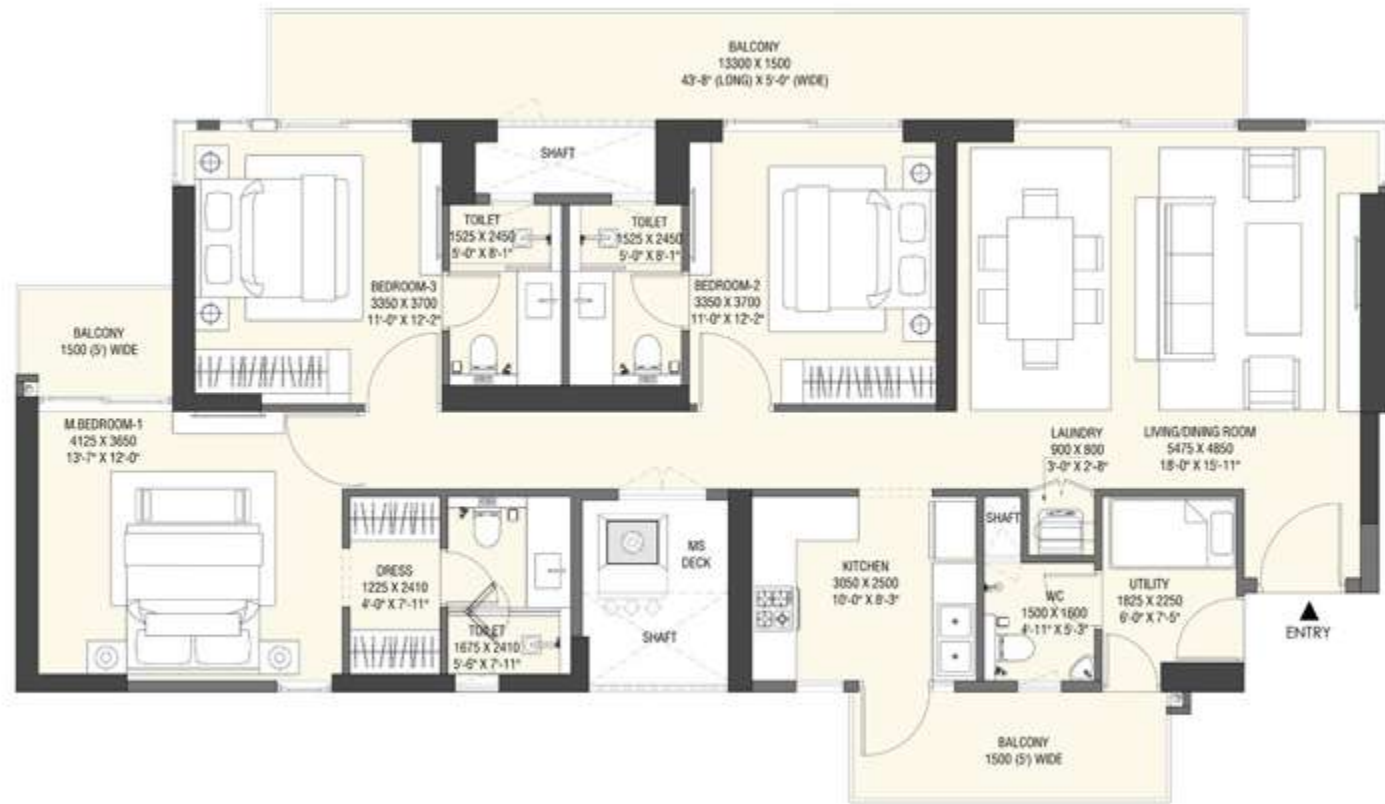
Carpet Area - 113.264 sq. m. (1219.17 sq. ft.)
Balcony Area - 29.558 sq. m. (318.16 sq. ft.)

Tower A | Wing 1 | Floor Nos.: 2, 4-11, 14, 16-19, 21-28, 30-34
Tower A | Wing 2 | Floor Nos.: 2, 4-12, 14-18, 22-28, 30-37
Tower C | Wing 1 | Floor Nos.: 2, 4-12, 14-18, 22-28, 30-37
Tower C | Wing 2 | Floor Nos.: 2, 4-11, 14, 16-19, 21-28, 30-34



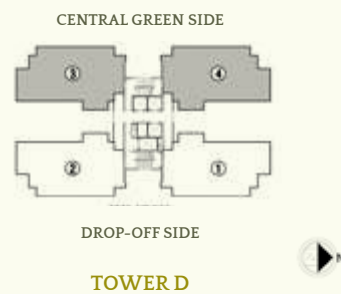
3BHK LARGE | 3BHK + 3T + U
TYPE-2

3BHK LARGE | 3BHK + 3T + U
TYPE-3



Carpet Area - 113.391 sq. m. (1220.54 sq. ft.)
Balcony Area - 29.559 sq. m. (318.17 sq. ft.)

Tower D | Wing 3 | Floor Nos.: 2, 4-11, 14, 16-33
Tower D | Wing 4 | Floor Nos.: 2, 4-12, 14-18, 20, 22-35



Carpet Area - 113.178 sq. m. (1218.25 sq. ft.)
Balcony Area - 29.558 sq. m. (318.16 sq. ft.)

Tower B | Wing 1 & 2 | Floor Nos.: 2, 4-8, 10, 12, 14-19, 21, 22, 24, 26-28, 30-37



3BHK LARGE | 3BHK + 3T + U
TYPE-4

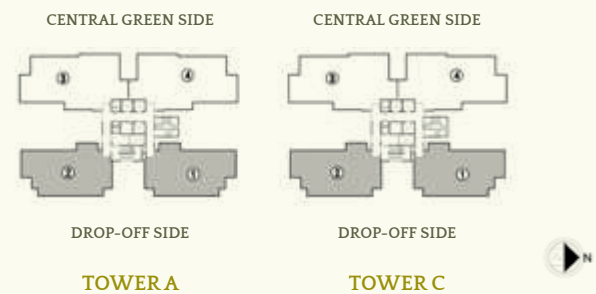


3BHK LARGE | 3BHK + 3T + U
TYPE-5



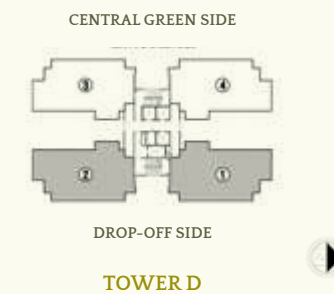
Carpet Area - 113.264 sq. m. (1219.17 sq. ft.)
Balcony Area - 38.318 sq. m. (412.45 sq. ft.)

Tower A | Wing 1 | Floor Nos.: 1, 3, 12, 15
Tower A | Wing 2 | Floor Nos.: 1, 3, 19, 21
Tower C | Wing 1 | Floor Nos.: 1, 3, 19, 21
Tower C | Wing 2 | Floor Nos.: 1, 3, 12, 15



Carpet Area - 113.390 sq. m. (1220.53 sq. ft.)
Balcony Area - 38.323 sq. m. (412.51 sq. ft.)

Tower D | Wing 1 | Floor Nos.: 1, 3, 12, 15
Tower D | Wing 2 | Floor Nos.: 1, 3, 19, 21



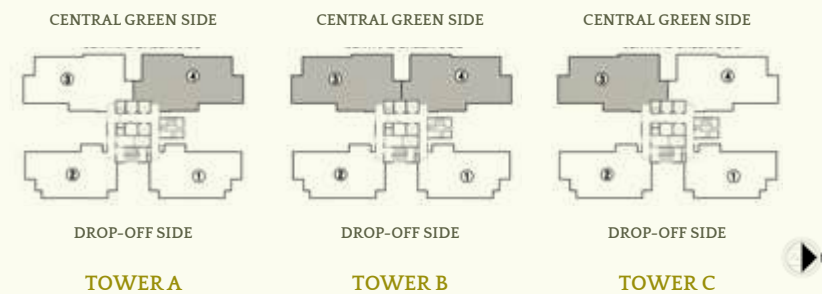
4BHK SMALL | 4BHK + 4T + PDR + U
TYPE-1

4BHK SMALL | 4BHK + 4T + PDR + U
TYPE-3



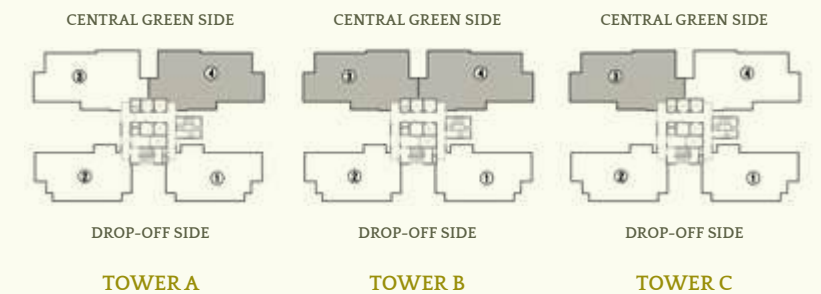
Carpet Area - 146.458 sq. m. (1576.47 sq. ft.)
Balcony Area - 39.944 sq. m. (429.96 sq. ft.)

Tower A | Wing 4 | Floor Nos.: 2, 4-11, 14, 16-35
Tower B | Wing 3 & 4 | Floor Nos.: 2, 4-8, 10, 12, 14-22, 24, 26-34
Tower C | Wing 3 | Floor Nos.: 2, 4-11, 14, 16-35



Carpet Area - 146.458 sq. m. (1576.47 sq. ft.)
Balcony Area - 46.814 sq. m. (503.91 sq. ft.)

Tower A | Wing 4 | Floor Nos.: 1, 3, 12, 15
Tower B | Wing 3 & 4 | Floor Nos.: 1, 3, 9, 11, 23, 25
Tower C | Wing 3 | Floor No.: 1, 3, 12, 15



Specifications

GREEN RATING

IGBC Platinum Pre-Certified

LIVING/DINING, FOYER, CORRIDOR

Floor: Stone.
Ceiling: Acrylic Emulsion Paint with Boxing for Concealing Services (As per Design).
Wall: Acrylic Emulsion Paint.

MASTER BEDROOM

Floor: Laminated Wooden Flooring.
Ceiling: Acrylic Emulsion Paint with Boxing for Concealing Services (As per Design).
Wall: Acrylic Emulsion Paint.

MASTER ENSUITE

Floor: Antiskid Vitrified Tile.
Ceiling: Moisture Resistant Gypsum Board Ceiling.
Wall: Vitrified Tiles/Ceramic Tiles/Acrylic Emulsion Paint.
Countertop: Granite/Marble.
Fittings/Fixtures: Wash Basin, WC, Mirror, Shower Partition, Vanity under Wash Basin.
Plumbing Fixtures: CP Fittings & Sanitaryware.

OTHER BEDROOMS

Floor: Laminated Wooden Flooring.
Ceiling: Acrylic Emulsion Paint with Boxing for Concealing Services (As per Design).
Wall: Acrylic Emulsion Paint.

OTHER BATHROOMS

Floor: Antiskid Vitrified Tile.
Ceiling: Moisture Resistant Gypsum Board Ceiling.
Wall: Vitrified Tiles/Ceramic Tiles/Acrylic Emulsion Paint.
Countertop: Granite/Marble.
Fittings/Fixtures: Wash Basin, WC, Mirror, Shower, Vanity under Wash Basin.
Plumbing Fixtures: CP Fittings & Sanitaryware.

KITCHEN

Floor: Antiskid Vitrified Tile.
Ceiling: Acrylic Emulsion Paint with Boxing for Concealing Services (As per Design).
Wall: Vitrified Tiles/Ceramic Tiles/Acrylic Emulsion Paint.
Countertop: Quartz/Granite/Artificial Stone.
Modular Kitchen: Modular Kitchen with Chimney + Hob, SS Sink, Geyser & Branded CP Fittings.

POWDER ROOM

Floor: Antiskid Vitrified Tile.
Ceiling: Moisture Resistant Gypsum Board Ceiling.
Wall: Vitrified Tiles/Ceramic Tiles/Acrylic Emulsion Paint.
Countertop: Granite/Marble.
Fittings/Fixtures: Wash Basin, WC, Mirror, Vanity under Wash Basin.
Plumbing Fixtures: CP Fittings & Sanitaryware.

LAUNDRY SPACE

Floor: Antiskid Vitrified Tile.
Ceiling: Moisture Resistant Gypsum Board Ceiling/Ceiling Plaster/Acrylic Emulsion Paint.
Wall: Vitrified Tiles/Ceramic Tiles/Acrylic Emulsion Paint.
Plumbing Fixtures: Water point with Drainage System; CP Fittings & Fixtures

BALCONIES

Floor: Antiskid Vitrified Tile.
Ceiling: Exterior Grade Paint.
Wall: Exterior Grade Paint.
Railing: Laminated Glass Railing in Balconies/MS Railing in Utility Balcony.
Light Fixtures: Ceiling Lights.

UTILITY ROOM

Floor: Antiskid Vitrified Tile.
Ceiling: Oil Bound Distemper
Wall: Oil Bound Distemper.

UTILITY TOILET

Floor: Antiskid Vitrified Tile.
Ceiling: Vitrified Tiles/Ceramic Tiles/Oil Bound Distemper.
Wall: Vitrified Tiles/Ceramic Tiles/Oil Bound Distemper.
Fittings/Fixtures: Wash Basin, WC, Mirror.
Plumbing Fixtures: CP Fittings & Sanitaryware.

DOORS & WINDOWS

Main Entry Door: Veneer Finished Engineered Flush Door; Digital Lock.
Internal Doors: Modular Skin/Engineered Flush Door with both side Laminated Finish.
External Doors/Windows: Powder-coated/Anodised Aluminium Frame with Glazing/UPVC

AIR CONDITIONING & VENTILATION

VRF with High Wall units in Bedrooms, Living & Dining.
Exhaust Fan in all Bathrooms.

Note: The above statements are tentative and subject to change/update basis detailed design and authority approvals.

Serenity Begins Here

Between light and landscape lies a world designed for belonging. Come home to Emaar Serenity Hills, where calm is not a luxury; it's a way of living.

An aerial photograph of the Dubai skyline at sunset. The Burj Khalifa is the central focus, towering over other skyscrapers. The sky is a mix of blue and orange, and the city lights are beginning to glow. The text 'About Emaar' is overlaid on the left side of the image.

About Emaar

Emaar is one of the world's most respected real estate groups, renowned for transforming skylines with its visionary architecture, engineering precision, and uncompromising standards. With a presence across commercial, residential, retail, hospitality, and leisure sectors, Emaar's name is etched onto some of the most recognisable landmarks in Dubai and beyond.

Emaar India upholds this global legacy through an exceptional portfolio of developments in Delhi NCR, Mohali, Lucknow, Indore, Alibaug, and Jaipur, continuing a tradition of creating inspired environments that define modern living.



GURUGRAM

EMAAR
INDIA

The Project "Serenity Hills" is being developed by Emaar India Limited in a phased manner, as per the approved phasing plan. Currently, only Phase I and Phase II, approved and registered with the Haryana Real Estate Regulatory Authority (Registration Nos. RC/REP/HARERA/GGM/993/725/2025/96 and RC/REP/HARERA/GGM/994/726/2025/97), are being offered for sale. This brochure may include visuals and descriptions that are shown to illustrate the overall vision of the development. The Club will be developed in the future phases. Prospective purchasers are advised to verify the approved details of the registered phases as available on the official website of Haryana RERA at <https://haryanarera.gov.in>.

